



J.W. Sims Community Center

Nolanville, TX | Raul Peraza | Louis Birdsong | Mayda Lagunas | Phillip Kelly

Mission Statement

"Providing a multi-use area that promotes social, educational, and creative activities for all members of the community of Nolanville."

In this redesign of the community center, we strive to celebrate the rich history of this space built by the community. We brought together the needs for the site by the residents and combined them with our creative force to develop four design alternatives. Each design was developed following the goals set by our team. The site is full of potential for further development in the coming years!

Goals and Objectives



Flexible

- Multi-functional:**
- Basketball Court
 - Children's Activities
 - Farmer's Market
 - Art Displays
 - L.I.D. Features



Educational

- Educational Opportunities:**
- Gardens
 - Outdoor Classrooms
 - Playground equipment



Social

- Social Events Spaces:**
- Shaded Structures
 - Sitting Areas
 - Moveable Seating
 - Open Green Space



Active

- Active and Child Play:**
- Active Connectivity
 - Playground
 - ADA Accessibility
 - Recreational Space



Existing Conditions

The existing equipment will be used in the final designs with an open space for the opportunity of recreational activities.



The back side holds potential for a gathering space close to the center creating another "room" for the community center.



Screening techniques will be implemented and connectivity to the existing neighborhood will be added.

Peer Review Stakeholder Analysis



Materials



Paving Lot Resurface
Creative resurfacing will enhance the longevity and usability of the parking lot.



Poured Rubber
The colorful possibilities of this material create a safe environment for all ages in active areas.



Shade Structures: Canvas or shade structures benefit the health of visitors during the summer months.











Decomposed Granite
Decomposed granite is a great option for a porous, soft-textured, ADA-accessible pathway.



Moveable Seating
Seating selected for the site increases the social and flexible use of the site.

Plant Material

	Spring	Summer	Fall	Winter
 Cinkapin Oak ¹				●●●●●●●●●●
 Shumard Red Oak ²				●●●●●●●●●●
 Live Oak ³				
 Eastern Red Bud ⁴	●●●●			
 Texas Mountain Laurel ⁵	●●●●			
 Cherry Laurel ⁶	●●●●●●●●	●●●●		●●●●●●●●●●
 Nellie R Steven Holly ⁷	●●●●●●●●	●●●●		●●●●●●●●●●
 Butterfly Bush ⁸		●●●●●●●●●●		
 Pink Muhly Grass ⁹	●●●●●●●●●●			●●●●●●●●●●
 Milkweed ¹⁰		●●●●●●●●●●	●●●●●●●●●●	
 Fall Aster ¹¹		●●●●		●●●●●●●●
 Fennel ¹²		●●●●●●●●●●		

Sources:
 1. <http://keyworduggest.org/gallery/928227.html>
 2. https://en.wikipedia.org/wiki/Quercus_muehlenbergii
 3. <https://www.pinterest.com/kydewarenpark/>
 4. http://www.humanflowerproject.com/index.php/weblog/comments/a_spectacular_live_oak_wedding
 5. <https://www.southernliving.com/home-garden/gardens/southern-gardening-redbud>
 6. https://www.dirtdoctor.com/garden/Holly-Savannah_vq896.htm
 7. <https://www.monrovia.com/plant-catalog/plants/1547/nellie-r-stevens-holly/>
 8. <https://nirts.com/pugster-pink-butterfly-bush-4-pot-buddleia/>
 9. <https://www.anniesannuals.com/plants/view/?id=3195>
 10. <https://www.gardendesign.com/plants/milkweed.html>
 11. <https://communityenvironment.unl.edu/fall-asters-are-worth-wait>
 12. <https://www.amazon.com/Florence-Fennel-100-Seeds-Things/dp/B001L8H1G8>



J.W. Sims Community Center

Raul Peraza | Building A Community Together

Design Description

Nestled in the middle of a thriving community, the JW Sims Community Center serves as an important node rich in history. The proposed design creates a multi-use space designed to encourage funding and community involvement. The design features of this design bring the opportunity for community members to build the site as a community.

As seen in the simulation below, the site creates a lush environment while keeping budget in mind. The open lawn area opens up the possibilities for several activities as demonstrated below. Keeping the context of the site in mind also included the addition of a green buffer along the perimeter of the site adding to the lush environment!

Open Lawn Space



Movie Night¹



Yoga Class²



Annual Easter Egg Hunt³



Weddings⁴

Farmer's Market



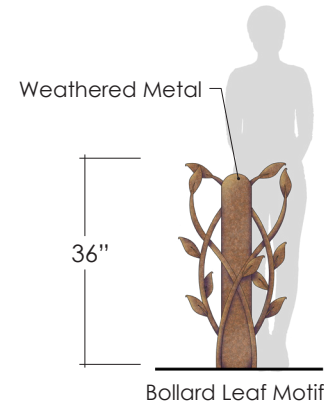
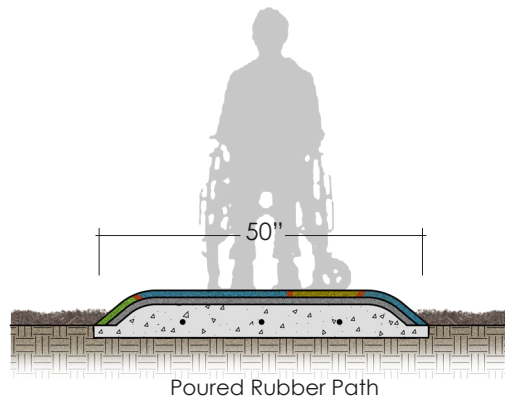
An Evolving Space

The perspective on the left depicts the open lawn area with the pollinator trail to the left. The open space is one of the most multi-use sections of the site. The number of activities in this area are endless! This area could be used for outdoor weddings, movie nights, games, and much more! The open lawn area can seat 148 people. The surrounding vegetation both screen and provide interest throughout the year.



The Details

The first detail A demonstrated a section of the poured rubber path used in the playground area. The second detail B demonstrates the possibility for upgrades to the bollards across the parking lot. These upgrades could also be applied to several parts of the site depending on budget restrictions. The site is a foundation for the addition of other elements that the community can also contribute!



Masterplan



Sources:
<https://www.guidelive.com/fun-places-and-events/2018/04/11/after-hours-adventures-museum-art-apriffs.asp>
<http://workoutwaper.co/yoga-outdoors-pictures/>
<https://www.fuquay-varina.org/793/Easter-Egg-Hunt>
<http://theearthed.co/outside-wedding-ideas/outside-wedding-ideas-25-ideas-for-an-outdoor-wedding-rustic-wedding-chic/>



J.W. Sims Community Center

Phillip Kelly | An Evolving Community

This space was designed to give the residents of Nolanville a Community Center that is flexible and multi functional. The Entrance will be getting a fresh new look with the integration of a two story lookout tower that serves as a viewpoint and as a new sign for the Community Center.

Moving towards the back side of the Community Center there will be a fun shaded playscape for children and parents to socialize and to enjoy playing with other children. The basketball court serves a multi purpose space for not only recreation but also farmers markets, concerts, and art shows.



Flexible



Educational



Social



Active

This space provides many areas that can transform into farmers markets, art shows, basketball court, and even a venue for a small community concert.

The covered tent like space just off of the community center is meant to not only serve as a childrens play space but also as a educational and social space for children and for parents gathering there.

Many areas of the community center promote the social aspect of the space. There are many areas including the butterfly garden, two story lookout tower, basketball court, and the playground area.

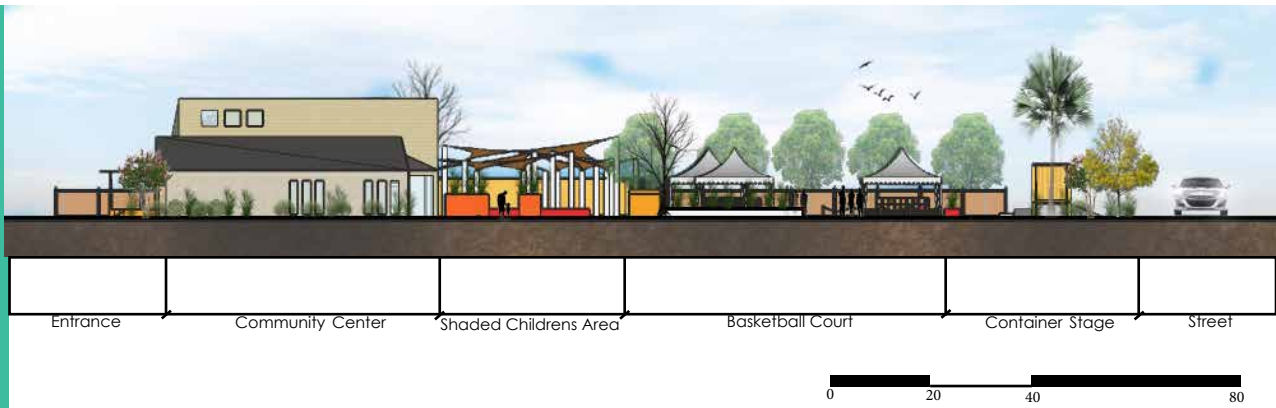
When it comes to active spaces at the community center there are many areas that promote a active and healthy lifestyle. The basketball court, trail, and the playground give many generations options for this healthy lifestyle.



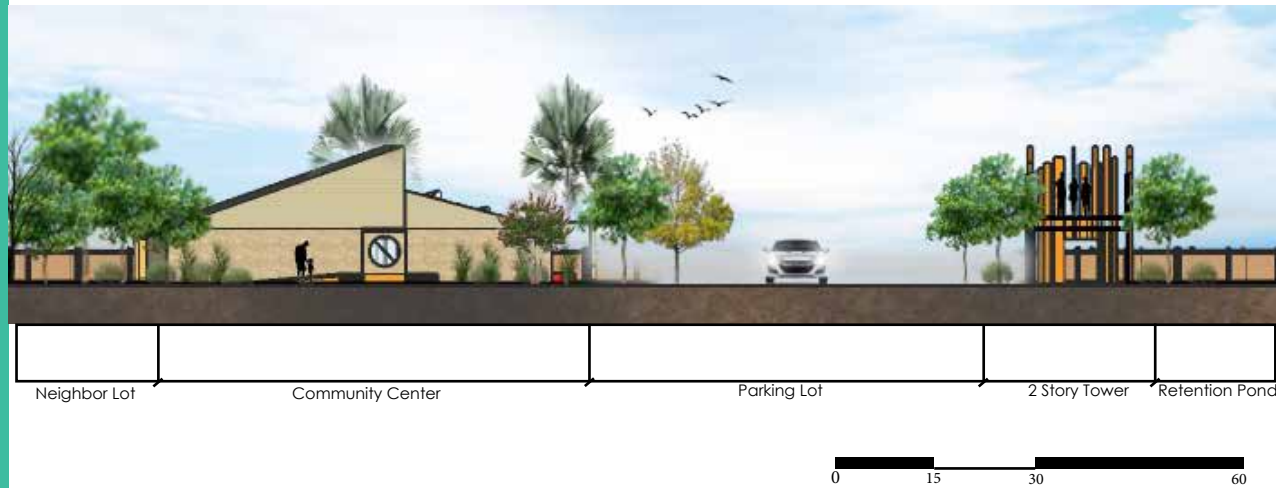
Master Plan



Section A-1



Section A-2

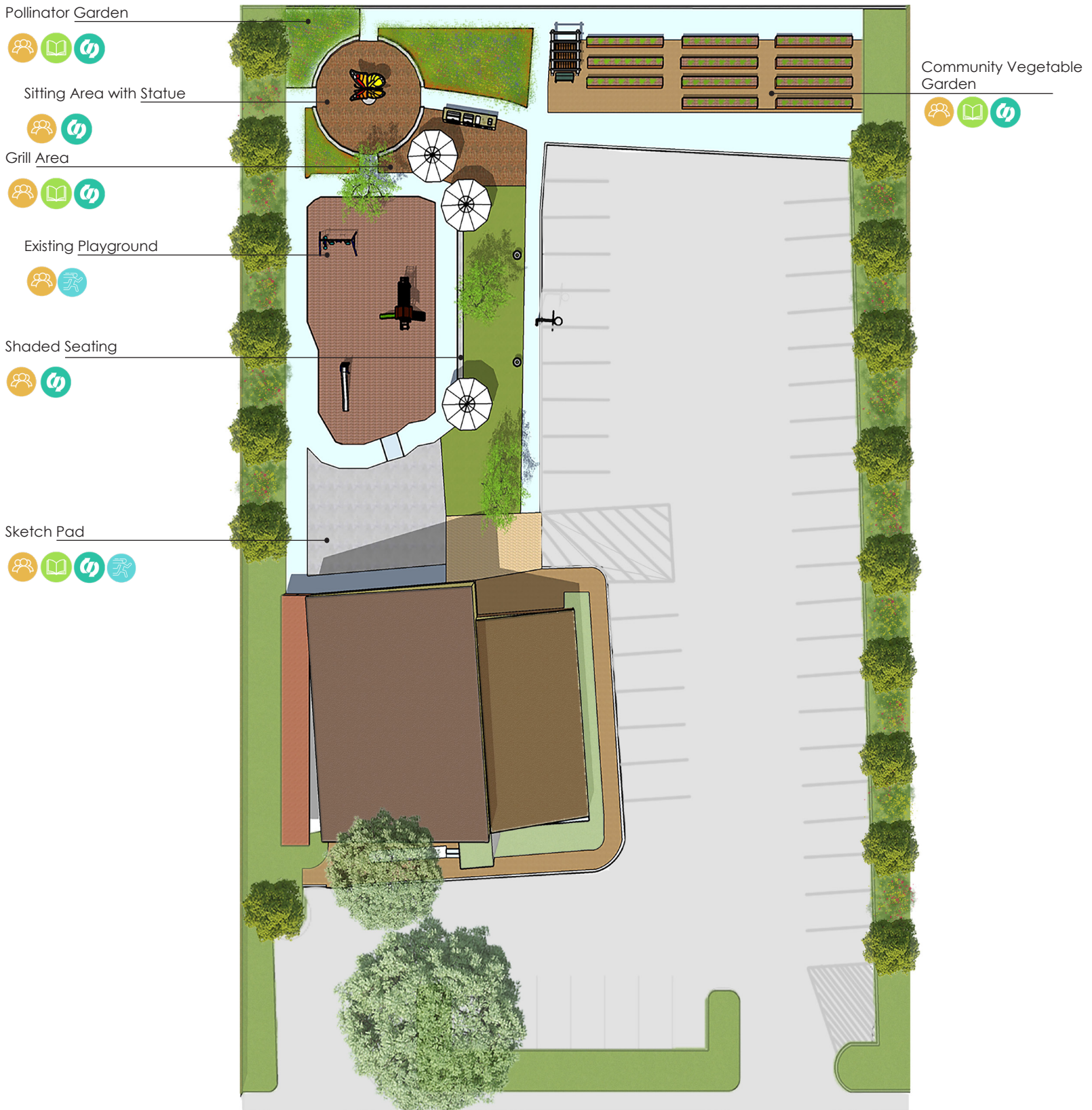




J.W. Sims Community Center

Louis Birdsong |

J.W. Sims Community Center Design



Scale : 1" = 20' - 0"



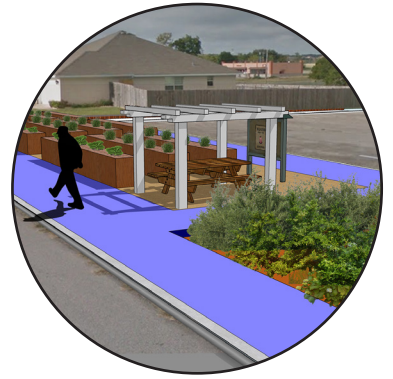
Before

After

Design Brief

Community Vegetable Garden

The proposed Nolanville community vegetable garden features several opportunities for residents to come together to socialize, educate, and grow different herbs and vegetables while growing their relationships with one another. The community garden proposal also features an arbor for shading and a bulletin board for the residents to stay informed on upcoming community events.



Pollinator Garden

The proposed pollinator gardens featured in this design feature heat & drought tolerant plants that attract pollinators of all shapes and sizes. Implementing these plants will not only provide seasonal interest whenever these plants are in bloom, but will also boost the biodiversity in this area. The pollinator garden seating area also features several revenue generating opportunities, such as potential engraved brick and garden dedications. The pollinator garden also features a large statue as a centerpiece which provides great opportunity for annual design contests for the Nolanville community



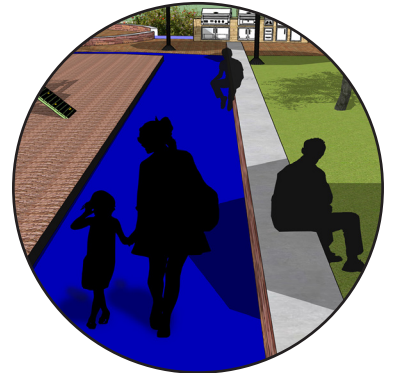
Sketch Pad

The sketch pad featured in this design provides a great opportunity for the artistic community of Nolanville to come together and learn from one another in this community-driven multi-functional space. The sketch pad area features a large asphalt area for chalk and various other art mediums, and a chalkboard style black wall which is actually on the side of the community center. This space serves as an art hub, but also can be used as a potential-multi use space for seasonal events such as farmers markets, local festivals, and many other activities. The sketch pad is meant to inspire creativity among the residents of Nolanville.



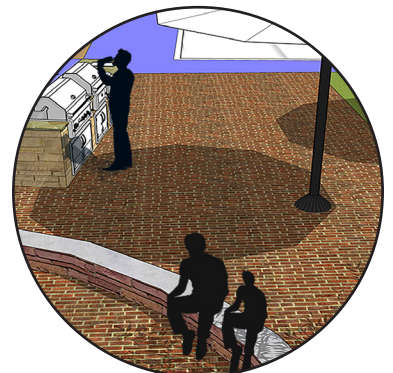
Shaded Seating

The shaded seating area of the Nolanville community center provides a comfortable, centrally located place for any Nolanville resident to come and hangout in the hub of the community center spaces. The shaded seating features several permanent tents which provide shade to keep users away from the sun while they spectate on the adjacent playground, talk with people in the grassy area on the other side of the bench, or even watch a pick-up basketball game going on in the parking lot. The blue path next to the concrete bench is made of poured-rubber, an ADA-friendly material that is soft and great to walk on.



Grill Area

Last but not least, the grill area featured in the design provides a great opportunity for the Nolanville residents to come together and celebrate the community they are a part of. This area provides opportunity for residents to educate one another on the art of grilling and even utilize the vegetable garden by implementing the locally grown produce in whatever they are cooking. The grill area is central in the community center design so anyone using the grill can still be a part of everything going on around them. The grill area also provides potential for engraved brick to generate revenue, and provides opportunity for Nolanville residents to leave their mark.





J.W. Sims Community Center

Mayda Lagunes | Creating a Functional Gathering Space



Connectivity between playground, entrance, and gathering area

Description:
 This design focuses on the enhancement of the community center by providing outdoor community gathering spaces. This space serves the purpose to be multi-functional with a variety of uses throughout the year. Anybody from the city of Nolanville can come and enjoy the amenities that are provided.



Community Garden and outdoor space



Entrance from neighborhood area

Plant Materials:



Ash Tree:
 Medium size tree but tall enough for shade.



Sotol:
 Full sun require with occasional watering



Live Oak Tree:
 Large size tree which can create shade for those open spaces



Texas Sage:
 Full sun with low water maint. Attracts butterflies



Evergreen Azaleas:
 large shrub that require partial shade but serves as a buffer.



Holly Dwarf Yaupon:
 Part sun with low maintenance.

http://www.perryvilnews.com/news/perryville-farmers-market-receives-board-approval-for-shade-canopy/article_81b174d0-8f71-11e3-b785-001a4bc6878.html
<http://oliveirenebasquetbol.com/tivoli-ny-antiques.html>
<https://www.eventshigh.com/detail/bangalore/fe2727333403308871bbf12ecc27931b-open-air-movie-night-for>
<https://www.ocregister.com/2012/07/31/crowds-enjoy-music-in-the-park/>
<http://treetownmurals.com/portfolio-posts/great-oak-community-mural-project/>
<https://www.sanantonio.gov/Portals/0/Files/Parks/pdf/Presentation%202%208-16-18.pdf?ver=2018-08-20-154053-507>

1- <http://texastreed.tamu.edu/content/TreeDetails/?id=37>
 2- <http://texastreed.tamu.edu/content/TreeDetails/?id=109>
 3- <https://homeguides.sfgate.com/deciduous-vs-evergreen-azaleas-41841.html>
 4- <https://www.monrovia.com/plant-catalog/plants/1147/texas-sotol/>
 5- <http://www.costafarms.com/plants/texas-sage/>
 6- <https://www.calloways.com/plants-flowers/shrubs/dwarf-yaupon-holly/>

Flexible space descriptions:

Two of the main areas in the community center are used as multi-functional spaces. The area below the community garden with permanent seating has the flexibility to be an outdoor classroom, be used for movie night events or others, art showings where the community can participate and more. Also, the open porous area by the parking lot can be used for events as well, for small concerts, for people selling food, etc.



Flexible



Educational



Social



Active

